



## Athens Land Trust

---

Our mission is to improve quality of life for all by preserving, protecting, and strengthening the fabric of the community through education and the stewardship of land for purposes of affordable housing, conservation, agriculture, and economic development.

We respond to community-identified needs and build individual and collective power among historically marginalized people.

---

# Athens Land Trust is more than a CLT

---

Recognizing the importance of land as a tool for empowerment and community health, ALT is a Community and Conservation Land Trust.

Addressing economic, environmental, and social justice opportunities through land access and protection, food system support and security, financial literacy, and building affordable homes



# ALT Portfolio

---

As of today, we have 58 homeowners and 6 lease purchasers in our program.

120 unit rental complex at 4th street village. 96 units are affordable

---

6 unit apartment complex on Waddell St.





ALT HOMES

before



before



after



after



ALT HOMES

# Education & Empowerment Program

---

## OUR GOAL

ALT's department of education & empowerment focuses on the economic development of communities and families through financial literacy, housing counseling, homeownership, and small business development.

# Financial Literacy

---

Through financial literacy, we help individuals expand their knowledge in finances so they will be able to understand and make informed decisions when dealing with personal financial planning and money management. We believe the long-term success of families, businesses, and communities depends on their ability to make sound financial decisions which allows them to achieve financial goals and security.

Throughout the year several financial literacy workshops will be held on topics such as:

- Credit/budgeting
- Student loans/financial aid
- Insurance
- Estate planning and wills

# Housing Counseling

---

We strive to provide responsive, high-quality housing counseling and education to low and moderate income residents. Our program includes both one-on-one counseling and group education. Our housing counseling program provides individuals with:

- Mortgage delinquency and default resolution counseling
- Pre-purchasing counseling for clients interest in the homeowner process
- Monthly Homebuyer education workshops
- Rental Housing Counseling



# Young Urban Builders (YUB)



# Young Urban Builders (YUB)



# Conservation Landowners



Langdale Farm



Andersons



Powers-Breedlove



Green

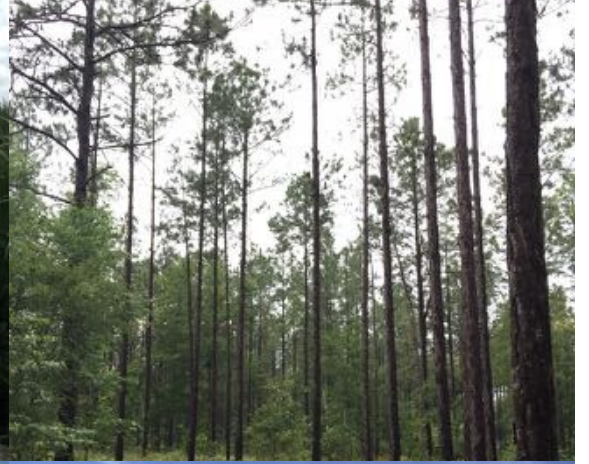


**LOST MOUNTAIN**

Conserved with assistance from:  
RAYMOND M. REED AND FAMILY  
NATIONAL PARK SERVICE'S AMERICAN  
BATTLEFIELD PROTECTION PROGRAM

The bottom section of the slide features a green background with a white border. It contains the text "LOST MOUNTAIN" in large yellow letters, followed by "Conserved with assistance from:" and "RAYMOND M. REED AND FAMILY" in smaller yellow letters. Below that is "NATIONAL PARK SERVICE'S AMERICAN BATTLEFIELD PROTECTION PROGRAM" in white. At the bottom, there are four logos: "Above Land Trust" (a heart shape with a tree), "TRUST FOR PUBLIC LAND" (a green square with a tree), "GEORGIA Department of Natural Resources" (a green tree logo), and a circular logo with a landscape scene.

# Conservation Properties



# Farmland Conservation

---

## **Farm Bill/USDA**

### Farmland Protection Outreach/Assistance

- Helping localities identify match and increase farmland protected in Georgia
- Increase farmland access and succession planning

### Regional Conservation Partnership Program

- Agreement to support new and beginning and historically underserved farmers access NRCS programs, specifically EQIP funding support

# Conservation Stewardship

---

## **ACC/Greenspace**

Volunteer work, educational walks, community engagement

## **Young Conservation Stewards**

Invasive removal, job skills and career workforce development

Trail building

## **Northeast Georgia Invasive Plant Cooperative**

Hot Shot Crew

Capacity Building, research,

On-the-ground invasive management

Research, publication



Photo courtesy of Joshua L/ Jones/Athens Banner Herald



Georgia FarmLink (GAFarmLink.org) helps farmers access and protect important farmland, facilitates farmland succession planning, and ensures Georgia's best farms continue contributing to the local economy through sustainable farming practices and farm business development strategies.



# Community Agriculture

---

Promote and provide farmer assistance in soil and water conservation strategies to achieve sustainable agriculture

Increase access to healthy food

Support economic and entrepreneurial opportunities for underserved youth and adults





# Farmer Outreach

---

Collaborative effort with the Natural Resources Conservation Service (NRCS)

Goal: to increase the number of minority farmers and raise awareness of NRCS programs

Conduct outreach and educational activities for underserved groups in 15 NE Georgia counties

- Workshops
- Small Business Farmer Course

Farmer network



Feed the People Farm Visit

# Farmer Outreach

---

## Program Objectives

- Introduce new and underserved populations to farming as a career
- Introduce new and existing farmers to NRCS programs
  - Easement programs such as the Farm and Ranchland Protection Program and the Grassland Reserve Program
- Increase opportunities for beginning, non-traditional farmers
  - Provide educational activities
  - Match with landowners who are not currently utilizing their land
- Expand opportunities for new farmers through a land lease program

# Community Agriculture

---

Promote and provide farmer assistance in soil and water conservation strategies to achieve sustainable agriculture

Increase access to healthy food

Support economic and entrepreneurial opportunities for underserved youth and adults



# Community Garden Network

---

Partnership of organizations that meets quarterly to collaborate on school and community garden projects

15 community gardens in low-income ACC communities

2 major “hub” gardens (West Broad & Williams)



# West Broad School

---

- Community garden
- Educational space
- General event space
- Farm stand



# West Broad Farmer's Market

---

Saturday market

Vendor development

- Grow Your Business Course

Cooking Demonstrations

Nutrition Education

Nourish/Wholesome Wave

Ambassadors



# West Broad Farmer's Market

---

Soul Food With a Twist



Seeds and Stems Farm



# Young Urban Farmers (YUF)

---

Support youth developing skills that will enhance confidence and competence as they prepare to enter the competitive workforce

Youth are paid a wage and receive the profits from their respective on-farm enterprises

Over 100 high school students have participated





# Williams Farm

---

- Incubation farm for new and beginning farmers
- Educational space
- Workshop space
- Farming demonstration venue




# Some of the extra





685 NORTH POPE STREET  
ATHENS, GA 30601  
706 613 0122  
[heather@athenslandtrust.org](mailto:heather@athenslandtrust.org)

A solid green horizontal bar at the bottom of the page.